

The Overview

Property Name:
63 Castleland Street
Barry
CF63 4LL

Price:
£250,000

Qualifier:
Asking price

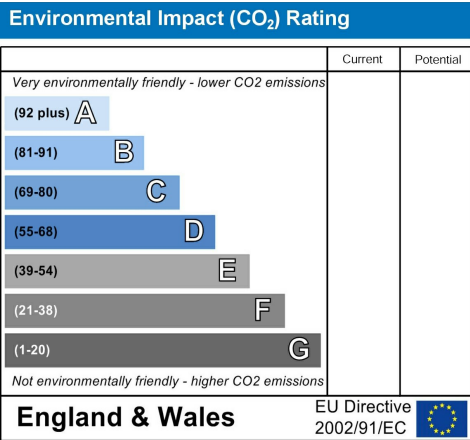
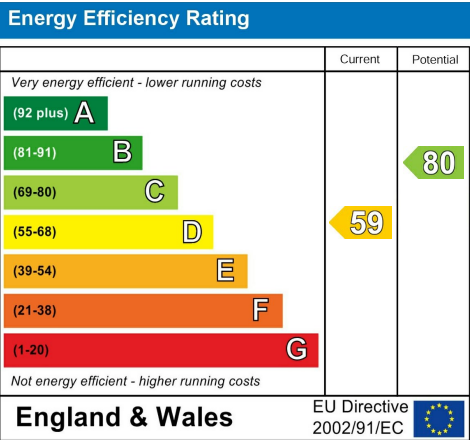
**4**

**2**

**2**

**D**

The EPC



The Bullet Points

- Victorian Elegance
 - Flexible Second Reception Room
 - Contemporary Bathrooms
 - Generous Bedrooms
 - Desirable Location
- Spacious Living Room
 - Modern Kitchen/Diner
 - Low-Maintenance Garden
 - Top Floor Retreat
 - Convenient Rear Access



The Main Text

Nestled in the heart of Barry lies this exquisite 4-bedroom Victorian terrace at Castleland Street. A symbol of architectural elegance from the Victorian era, this property is a stunning blend of historical charm and modern convenience. The façade boasts distinctive bay windows, immediately setting this home apart.

Upon entering, visitors are greeted by a spacious entrance hall boasting ample understairs storage. This hallway acts as the gateway to the home's generous living spaces. The living room is expansive and inviting, adorned with an original fireplace and bathed in natural light, thanks to its impressive bay windows. Additionally, the adjacent second reception room offers flexibility in its use, whether as a cosy sitting area, a playroom for the little ones, or even the potential for an open-plan extension to the living room in the future.

Moving on, the kitchen/diner is a modern homeowner's delight. It comes with abundant storage units finished in a crisp white, ensuring every culinary gadget has its place. The space is perfectly equipped to house essential appliances. It even offers a designated area suitable for a dining table and chairs, making it an ideal spot for family meals or entertaining guests. Adjacent to this, the contemporary downstairs shower room is designed in a chic grey-and-white palette, exuding modern sophistication.

The garden offers the best of both worlds for those who love the outdoors but prefer minimal upkeep. The grey patio is a fantastic space for alfresco dining or relaxing on a warm evening. Complemented by art official grace, the garden space exudes tranquillity. Furthermore, the rear gate provides convenient lane access.

Ascending to the first floor, you're presented with three spacious double bedrooms. The primary bedroom is expansive, made even more luminous by two large windows, ensuring a light-filled retreat. The floor also houses a sophisticated grey and white bathroom, equipped with a luxurious bath to relieve the day's stresses.

Finally, the topmost floor is home to another sizable double bedroom. It is not just a space to rest; it also offers practical storage in the eaves, ensuring that every inch of this home is utilised to its fullest potential.

Castleland Street is a remarkable blend of Victorian charm and contemporary amenities, ensuring a luxurious living experience in the heart of Barry.

Additional Information

Type of home: Terraced House

Tenure: Freehold

EPC Rating: 59 (D)

Council tax band: C

Borough: Vale of Glamorgan

The Local Area

Barry, a coastal gem in Wales, seamlessly blends its rich historical heritage with modern conveniences, offering residents a unique living experience. Known for its picturesque beaches, vibrant town centre, and scenic parks,

it's a location that caters to both nature lovers and urban enthusiasts. Castleland Street, situated in the heart of Barry, is a testament to the town's architectural legacy. The street is lined with beautifully preserved Victorian terraces, echoing the tales of yesteryears. A short stroll away, one can find an array of local amenities, from charming cafes and boutique shops to more prominent retail outlets. With easy access to public transport and a strong sense of community, Barry, particularly Castleland Street, offers unparalleled tranquillity and convenience. Whether taking a leisurely walk along the promenade, exploring the bustling market, or indulging in local delicacies, Barry ensures a delightful experience for its inhabitants.

Schools

Barry takes pride in its educational offerings, boasting various schools catering to diverse academic and extracurricular needs. From primary establishments that lay the foundation for early learning to secondary schools fostering critical thinking and innovation, the town is dedicated to nurturing the next generation. Many of these institutions are celebrated for their holistic approach to education, integrating traditional academic curricula with many extracurricular activities. The local schools have also built strong ties with the community, often participating in events that benefit students and residents. Parents will appreciate these schools' emphasis on creating a safe and nurturing environment, ensuring each child receives individual attention and support. With easy accessibility from Castleland Street and other parts of town, Barry's schools are beacons of learning, ensuring that families are well-served in their educational pursuits.

Transport

Barry, strategically located on the southern coast of Wales, boasts a robust and efficient transportation network that facilitates seamless movement both within the town and to surrounding regions. A primary highlight is the Barry Railway Station, which provides regular services to Cardiff and other major cities, making daily commutes and weekend getaways hassle-free. For those who prefer road travel, the town is well-connected by an extensive road network, with major roads and motorways easily accessible, ensuring quick drives to neighbouring towns and cities. Additionally, local bus services crisscross the town, offering convenient routes that connect residential areas to shopping centres, schools, and recreational spots. Cardiff Airport is just a short drive away for those with an international or national destination, positioning Barry as a convenient hub for domestic and international travellers. With such comprehensive transport options, residents of Castleland Street and the broader Barry community enjoy unparalleled connectivity, making daily travel efficient and straightforward.

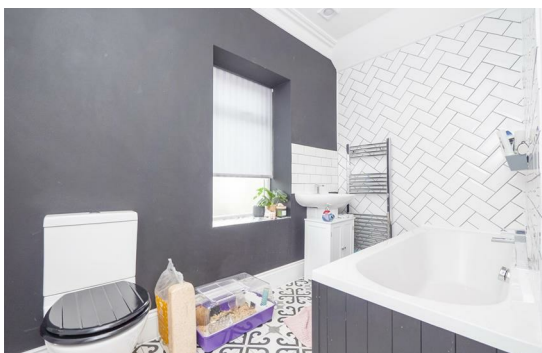


RE/MAX
PROPERTY HUB

63 Castleland Street, Barry, CF63 4LL

The Photographs

Please note: we have provided space for 48 photographs over the next four pages, but we may not fill all 48 spaces if we don't need to. If there are more than 48 photographs then we will email the remainder to you.

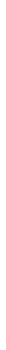
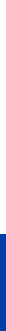
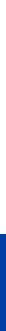
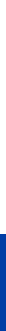
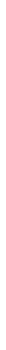
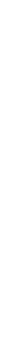
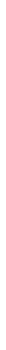
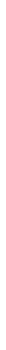
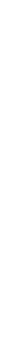
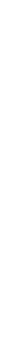
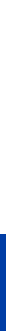
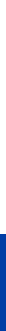


RE/MAX
PROPERTY HUB

63 Castleland Street, Barry, CF63 4LL

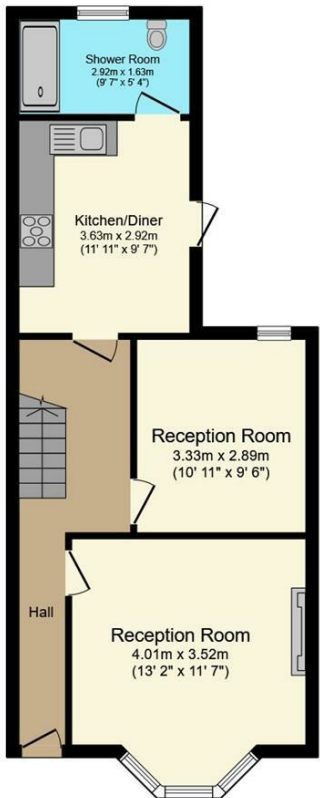
The Photographs

Please note: we have provided space for 48 photographs over the next four pages, but we may not fill all 48 spaces if we don't need to. If there are more than 48 photographs then we will email the remainder to you.

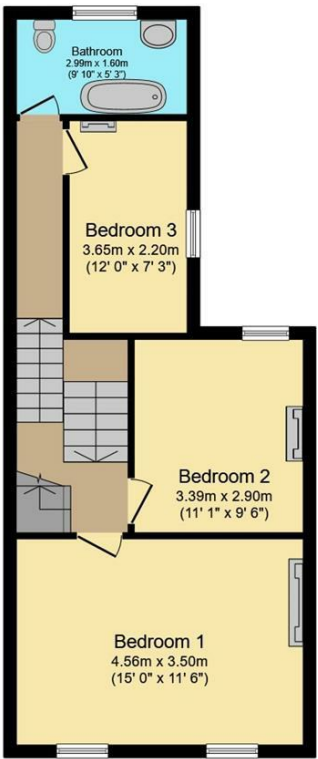


The Floorplan

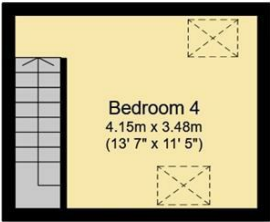
The Map



Ground Floor



First Floor



Second Floor



This plan is for illustration purposes only and may not be representative of the property. Plan not to scale. Powered by PropertyBox



63 Castleland Street, Barry, CF63 4LL