



RE/MAX
PROPERTY HUB



86 Glanaman Road, Cwmaman, Aberdare, Glamorgan, CF44 6HY
£240,000



86 Glanaman Road, Cwmaman, Aberdare, Glamorgan, CF44 6HY

£240,000

Glanaman Road Cwmaman, Aberdare, CF44

Property Description

RE/MAX Estate Agents offer this stunning property in Cwmaman, Aberdare, CF44. The property provides off-street parking leading to a storage/garage unit. There is side access to the rear garden and a front garden looking out at the mountains. Entering the property into the entrance hall, you have a downstairs WC. The garden has a patio on the first level and a remarkable hand-built pond with all the fish to stay with the property.

The property offers underfloor heating downstairs and alarm system.

Sellers Thoughts:

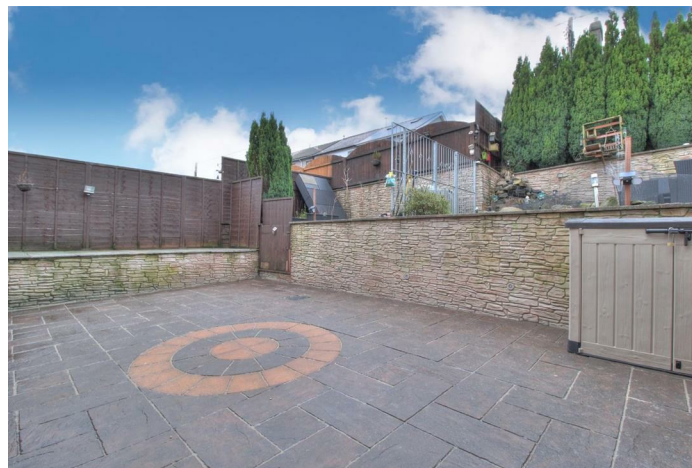
We are BIG planners and wanted to plan for retirement so we decided a few years ago we wanted to get away from the city and dip our toes into Wales to see if we liked it with the idea that if we did then we would buy a smallholding. Of course, we fell in LOVE with Wales! The wonderful people and the beautiful countryside in the valleys = perfection. Now it feels like it is the right time to pick up sticks and make our final move and we couldn't be more excited at the prospect!

Description

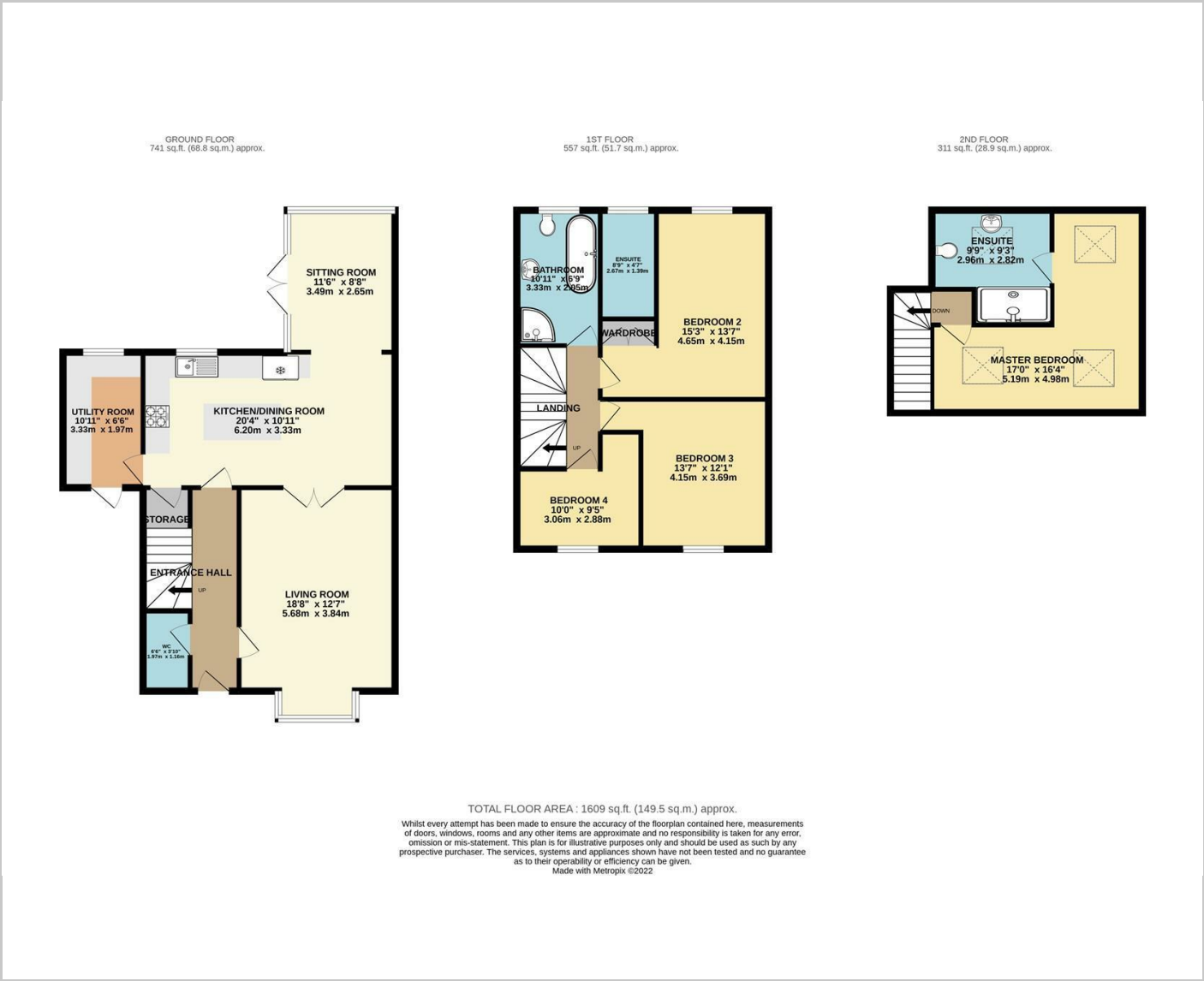
Glanaman Road Cwmaman, Aberdare, CF44

Property Description

RE/MAX Estate Agents offer this stunning property in Cwmaman, Aberdare, CF44. The property provides off-street parking leading to a storage/garage unit. There is side access to the rear garden and a front garden looking out at the mountains. Entering the property into the entrance hall, you have a downstairs WC. The garden has a patio on the first level and a remarkable hand-built pond with all the fish to stay with the property. On the first floor, the bathroom has a bath and shower separate. Bedroom 4 is the work from home office or single bedroom use. Bedroom 3 is a double size layout with built-in wardrobes. Bedroom 2 is another double bedroom with the benefit of an ensuite with a shower. The top floor is the master bedroom, has plenty of built-in storage, it's a kingsize layout with stunning views from the window. Ensuite with a shower in an outstanding



Floor Plans



Area Map



Energy Performance Graph



These particulars, whilst believed to be accurate are set out as a general outline only for guidance and do not constitute any part of an offer or contract. Intending purchasers should not rely on them as statements of representation of fact, but must satisfy themselves by inspection or otherwise as to their accuracy. No person in this firms employment has the authority to make or give any representation or warranty in respect of the property.