



RE/MAX
PROPERTY HUB



19 Colwyn Road, Rumney, Cardiff, Gwent, CF3 3JS
£400,000



Colwyn Road, Rumney, Cardiff CF3

360 Virtual Reality Tour Available

Property Description

RE/MAX Estate Agents offer this stunning six-bedroom semi-detached property with excess land to the side. The property has a driveway and a garden with an outdoor porch before entering the property. Side access leading to the garden, the garden has four different levels to it. The first level leading from the side access gives you rear access to the property into the utility room or the conservatory. Beautiful pond with some impressive fish. Going up to level 2, you have another seating area, leaving three of the property's selling parts. Perfect for family and friends to gather. To the side of the property, I would class it as level 4. You have a large brick built shed used as a bird's home but so much potential. A play area next to it. Overall, there is a lot of potential and rare to see on the market.

FIRST FLOOR

Porch

Entering the property before entering the entrance hall always needs storage space and is airy and light.

Family Room

14'5" x 10'9"

Perfect seating area to spend with family or closing the door to get away from the children.

Dining Room

21'3" x 11'1"

Open plan with the kitchen gives it such a remarkable space, easily fitting a dining table and chairs.

The Kitchen

21'3" x 11'1"

Open plan with the dining room breakfast bar splitting the two rooms. Plenty of storage cupboards with space for electrical appliances.

Conversantroy

14'5" x 10'5"

Beautiful indoor suntrap, lots of natural sunlight, double doors leading out to the garden.

Utility Room

12'5" x 11'1"

Storage cupboards, more space for electrical appliances, and a new boiler ready to be boxed in.

Shower Room

9'2" x 5'2"

Downstairs WC with a shower so downstairs living is accessible.

Sitting Room

12'5" x 10'9"

Perfect children's playroom or even a relaxing room or work from home office. You make what you want of it.

SECOND FLOOR

Bathroom

9'2" x 7'10"

The bathroom has a beautiful corner bathroom and tiled sandy cream all around.

Master Bedroom

12'5" x 10'5"

Kingsize layout with built-in mirror wardrobes can be removed for extra space.

Bedroom 2

12'1" x 10'9"

Double size layout, easily fitting built-in storage as seen in the photos.

Bedroom 3

12'1" x 11'1"

Double size layout, once again a very decent size room.

Bedroom 4

12'5" x 11'5"

Double once again but the smallest room, used as the children's room.

TOP FLOOR

Bedroom 5

13'5" x 12'5"

The loft bedroom has a double-sized layout with a Velux window and built-in storage in the eves.

Bedroom 6

13'5" x 9'2"

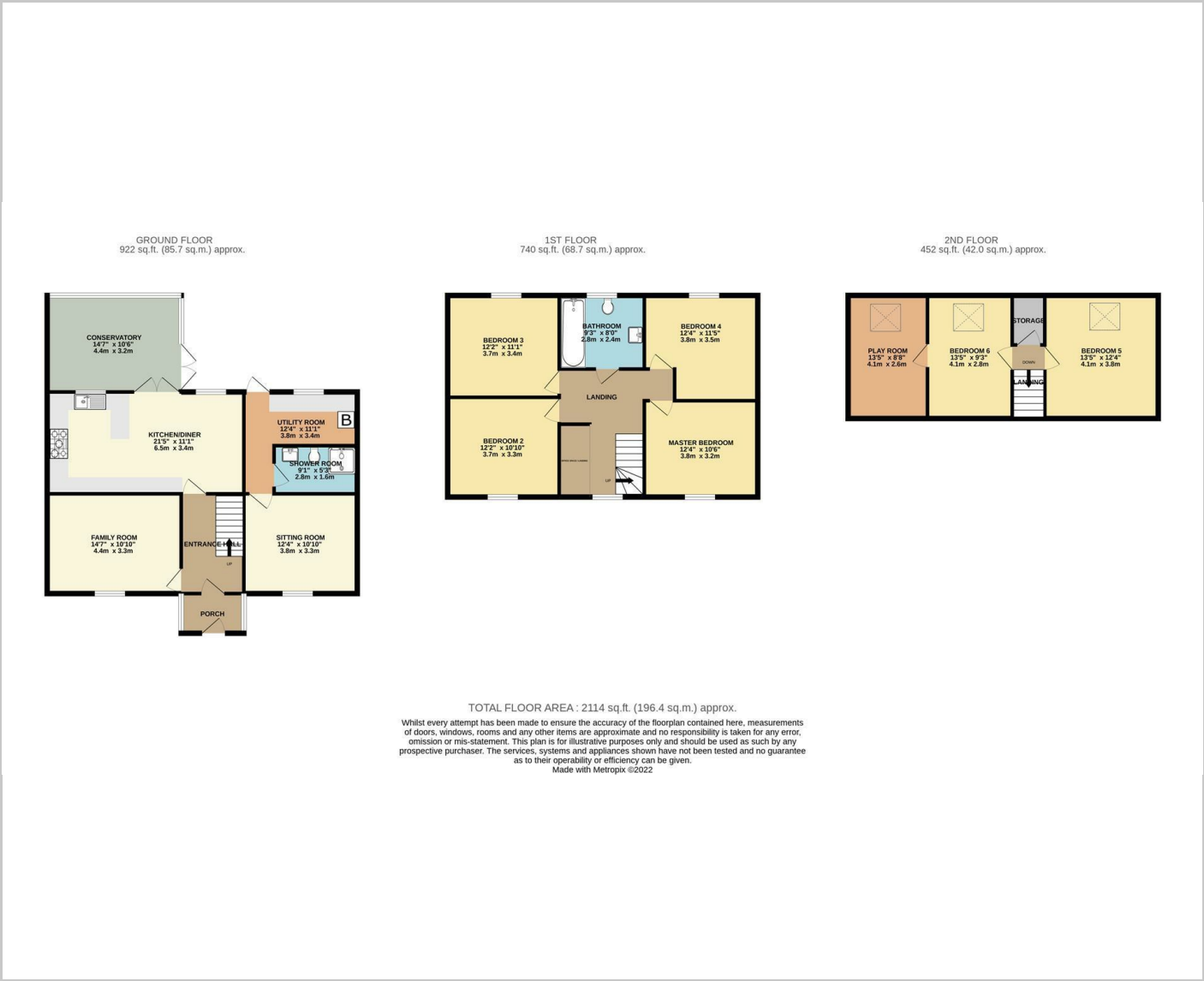
Double size layout once again with the Velux window. This room has an extra room going next to it. It could be used as another bedroom or work from home office or a dressing room.

Play Room

13'5" x 8'6"



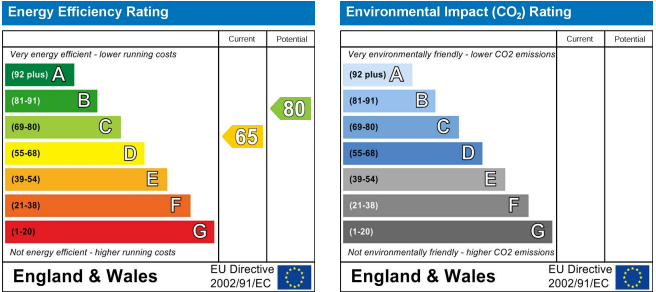
Floor Plans



Area Map



Energy Performance Graph



These particulars, whilst believed to be accurate are set out as a general outline only for guidance and do not constitute any part of an offer or contract. Intending purchasers should not rely on them as statements of representation of fact, but must satisfy themselves by inspection or otherwise as to their accuracy. No person in this firms employment has the authority to make or give any representation or warranty in respect of the property.

