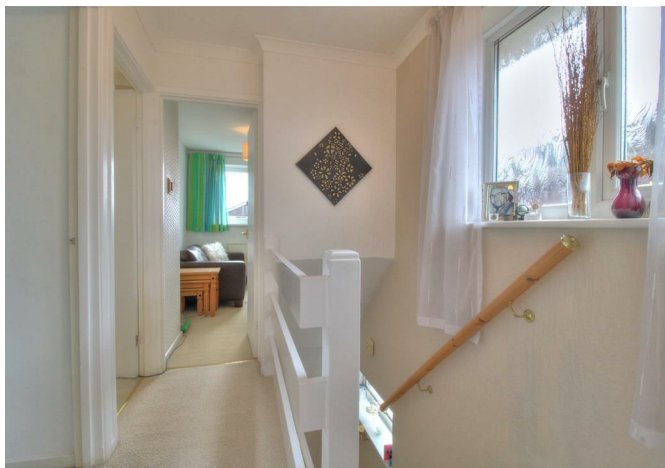




RE/MAX
PROPERTY HUB



21 Parc-Y-Coed, Creigiau, Cardiff, Glamorgan, CF15 9LX
£360,000



Parc-Y-Coed, Creigiau, Cardiff, CF15

360 Virtual Reality Tours Available

Property Description

RE/MAX Estate Agents Cardiff offers this beautiful three bedroom detached property in a quiet cul de sac in Creigiau, Cardiff, CF15. The property offers off-street parking leading to a garage at the front of the house. Large front garden with side access on both sides of the house. The plot is tucked away at the end of the cul de sac, making it a perfect location. Properties around here are rare to come to market with this seller raising her family and life here for over 40 years. Viewing is highly recommended and won't be on the market for long.

Reason for selling: The seller wants to move closer to the family within Cardiff and has already been accepted on a property.

Tenure: Freehold
Council Band: F

Living Room
18'0" x 13'9"

The living room is very spacious and wraps around for even more space.

Dining Room
11'1" x 9'6"

The dining room is separate from the kitchen and living room, with large sliding doors to admire the rear garden. Easily fitting a dining table and chairs for family and friends to gather.

Kitchen
11'1" x 8'10"

The kitchen has built-in storage and a door leading to the side of the property. Plenty of storage cupboards with space for electrical appliances.

Bathroom
6'10" x 6'2"

The bathroom has a bath and shower in one, with a beautiful pink finish.

Bedroom 3
11'5" x 6'10"

The room is a generous size, ideal for a single, giving more room for a wardrobe, still fitting a double bed. It could be used for work at home office/study.

Bedroom 2
11'1" x 11'1"

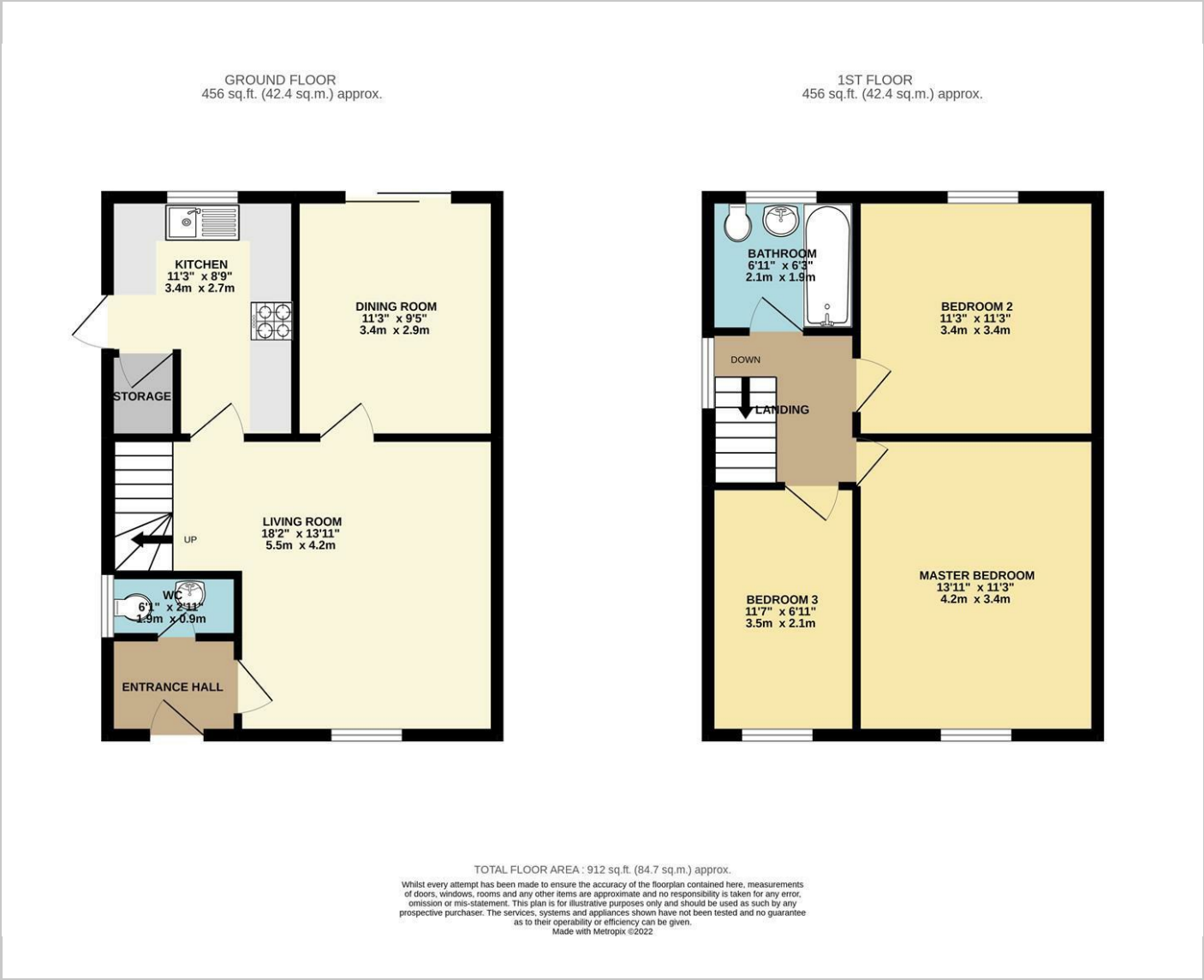
The double size layout is spacious with room for drawers and wardrobes.

Master Bedroom
13'9" x 11'1"

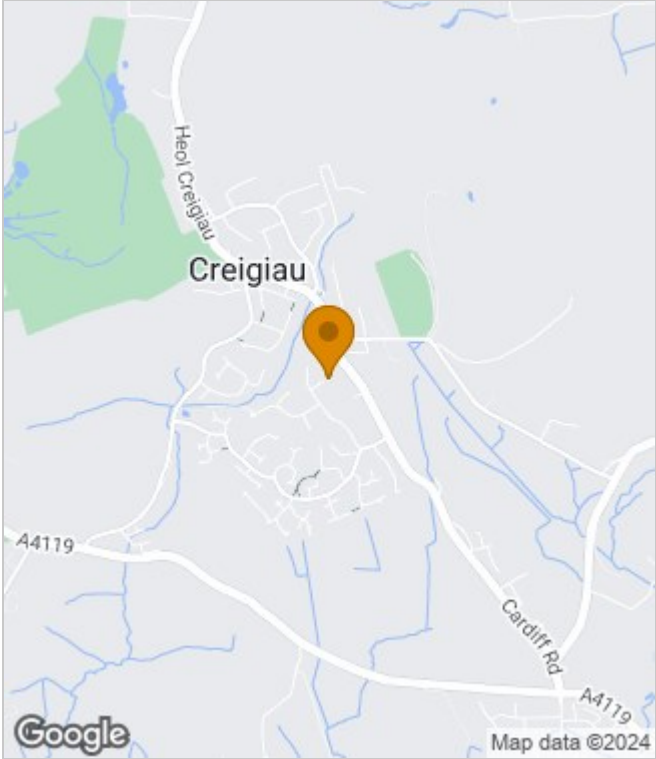
King size layout with built-in wardrobes can easily be removed for more space.



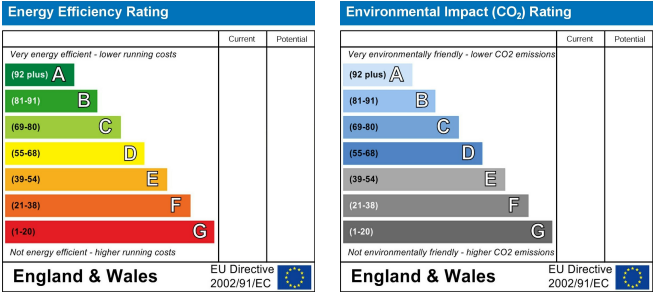
Floor Plans



Area Map



Energy Performance Graph



These particulars, whilst believed to be accurate are set out as a general outline only for guidance and do not constitute any part of an offer or contract. Intending purchasers should not rely on them as statements of representation of fact, but must satisfy themselves by inspection or otherwise as to their accuracy. No person in this firms employment has the authority to make or give any representation or warranty in respect of the property.