

The Overview

Property Name:
11 Woodham Park
Barry
CF62 8JF

Price:
£250,000

Qualifier:
Asking price

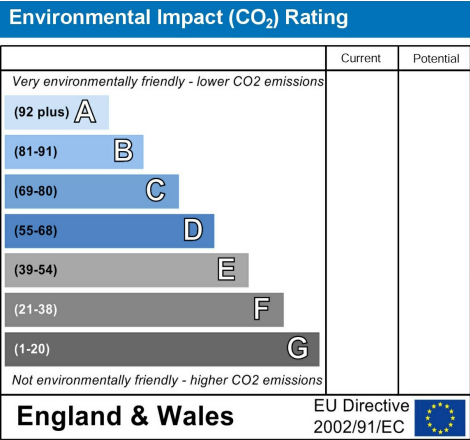
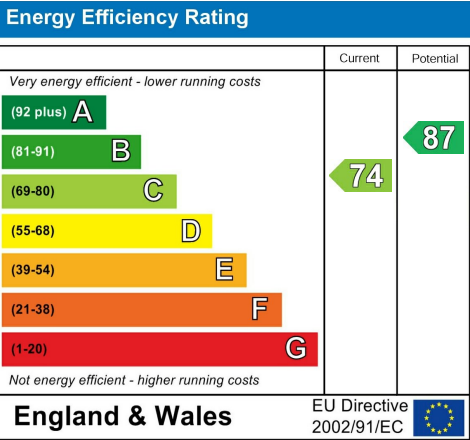
**3**

**1**

**1**

**C**

The EPC



The Bullet Points

- Three spacious bedrooms
 - Modern kitchen with breakfast bar
 - Stylish grey tiled flooring
 - Off-street parking
 - Charming garden with patio and lawn
- Open-plan kitchen/living/diner
 - Marble-effect worktops
 - Patio doors to rear garden
 - Contemporary family bathroom
 - Ample storage throughout



The Main Text

This beautifully presented three-bedroom terraced home is located in the sought-after area of Woodham Park, Barry. Offering off-street parking, this modern property is perfect for families or professionals seeking stylish and functional living space.

Upon entering the property, you are welcomed into an inviting entrance hall. Beyond, stunning wooden glass-paned double doors lead you into the heart of the home – a striking open-plan kitchen, living, and dining area. This space is a testament to modern design, featuring sleek grey tiled flooring, a contemporary kitchen complete with a breakfast bar, and elegant marble-effect worktops. The neutral tones and grey wooden internal doors throughout create a seamless flow, while patio doors in the kitchen/diner area open directly onto the garden, providing an ideal space for entertaining. There is also practical under-stairs storage for added convenience.

Upstairs, the property continues to impress with three generously sized bedrooms, all finished to the same standard as the ground floor. Each room features modern grey radiators and matching internal doors, enhancing the home's cohesive design. One of the bedrooms includes a built-in storage cupboard, adding a practical touch. The family bathroom is stylish and modern, boasting light tiles on the walls and flooring for a bright, clean aesthetic.

The rear garden is a delightful outdoor retreat. It offers a patio space perfect for seating and a lawned area ideal for children or pets to play.

Additional Information

Type of home: Terraced House

Tenure: Freehold

EPC Rating: (C)

Council tax band: C

Borough: Vale of Glamorgan

Local Area

Woodham Park in Barry is a desirable residential area known for its welcoming

community and peaceful surroundings. The neighbourhood offers a blend of green spaces and convenient amenities, including local shops, cafes, and leisure facilities, making it ideal for families and professionals. Residents enjoy easy access to parks and coastal walks, providing opportunities to unwind and appreciate the area's natural beauty. The serene environment and nearby conveniences make Woodham Park a highly sought-after location.

Schools

The neighbourhood around Woodham Park benefits from a range of well-regarded schools catering to various age groups. These educational institutions are known for their commitment to providing a high standard of teaching and fostering a supportive learning environment. Families in the area appreciate the variety of options available, ensuring access to quality education close to home. With a strong focus on academic and personal development, the schools contribute to the area's reputation as a family-friendly community.

Local Transport

Woodham Park in Barry is well-served by convenient transport links, making it easy to navigate the local area and beyond. The neighbourhood offers regular bus services connecting residents to key destinations and nearby towns. Additionally, the area benefits from its proximity to major road networks, ensuring straightforward access for commuters and travellers. With reliable and accessible transport options, Woodham Park provides a convenient base for those looking to explore or easily commute.

Material Information Property Report

You can click the property report to view the Utility Supply, Rights and Restrictions, Risks, and a full in-depth report on the property.

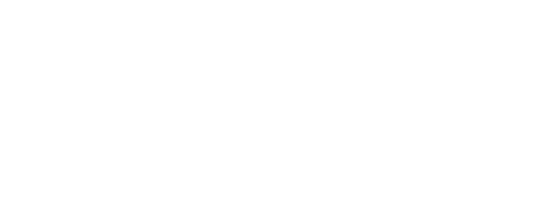
Please get in touch with us directly if you'd like a link or PDF sent to you.

NTSELAT Approved



The Photographs

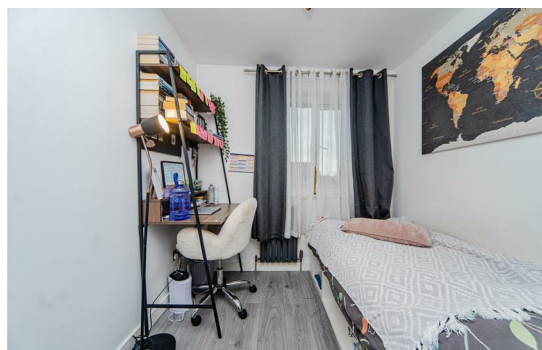
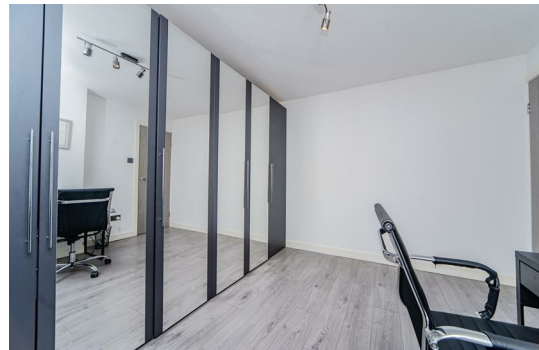
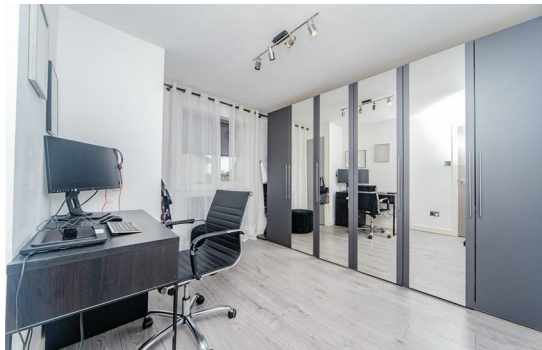
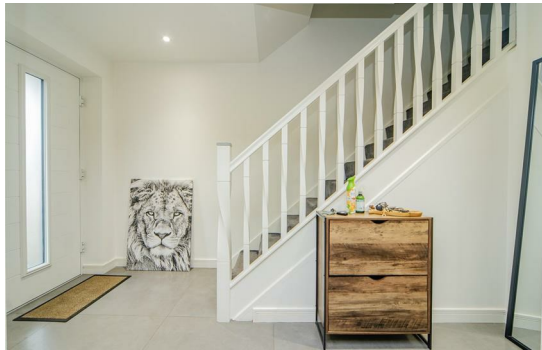
Please note: we have provided space for 48 photographs over the next four pages, but we may not fill all 48 spaces if we don't need to. If there are more than 48 photographs then we will email the remainder to you.



11 Woodham Park, Barry, CF62 8JF

The Photographs

Please note: we have provided space for 48 photographs over the next four pages, but we may not fill all 48 spaces if we don't need to. If there are more than 48 photographs then we will email the remainder to you.



11 Woodham Park, Barry, CF62 8JF

The Photographs

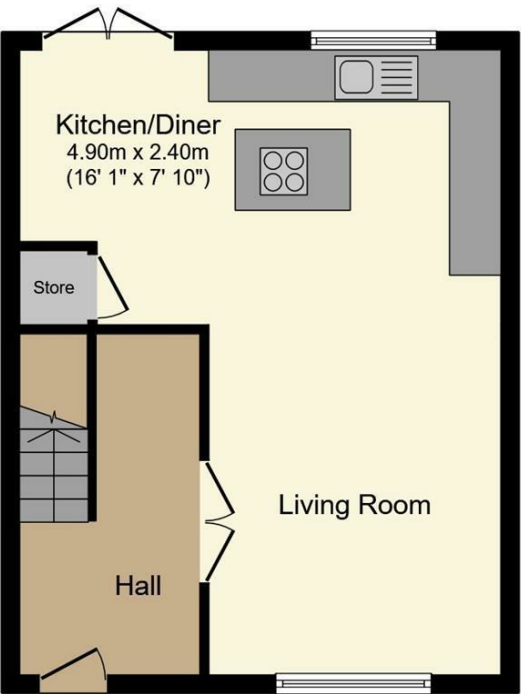
Please note: we have provided space for 48 photographs over the next four pages, but we may not fill all 48 spaces if we don't need to. If there are more than 48 photographs then we will email the remainder to you.



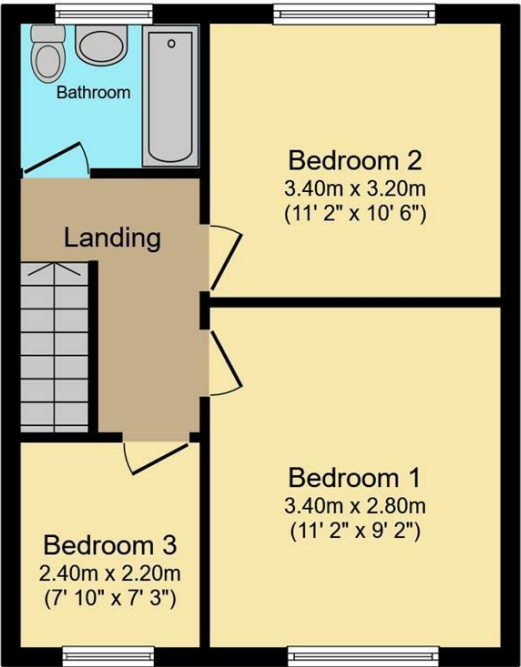
11 Woodham Park, Barry, CF62 8JF

The Floorplan

The Map



Ground Floor
Floor area 40.7 m² (438 sq.ft.)



First Floor
Floor area 40.7 m² (438 sq.ft.)

TOTAL: 81.4 m² (876 sq.ft.)

This floor plan is for illustrative purposes only. It is not drawn to scale. Any measurements, floor areas (including any total floor area), openings and orientations are approximate. No details are guaranteed, they cannot be relied upon for any purpose and do not form any part of any agreement. No liability is taken for any error, omission or misstatement. A party must rely upon its own inspection(s). Powered by www.Propertybox.io

