

Property Name:  
*Whinberry Way, Cardiff*

Price:  
*£1,100 Per Calendar Month*

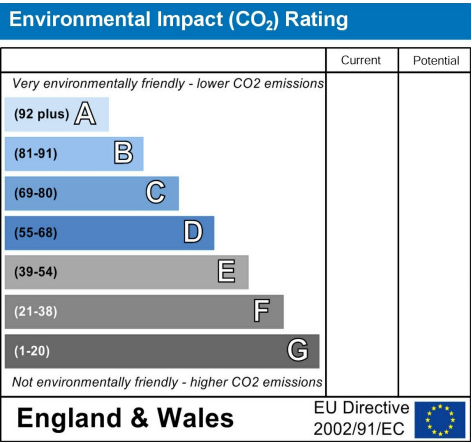
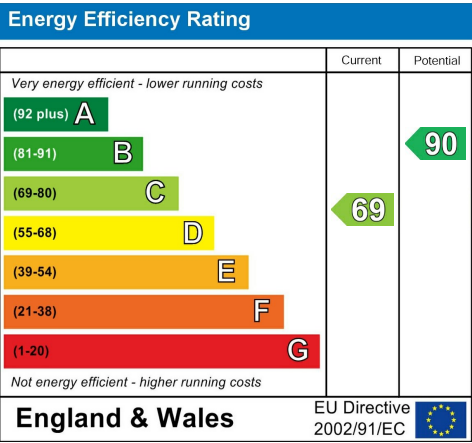
Qualifier:  
*Per Calendar Month*

 **2**

 **1**

 **1**

 **C**



The Bullet Points

- Two-bedroom mid-terrace
  - Off-street parking
  - Sliding doors to the garden
  - Modern fitted kitchen
  - Family bathroom with shower
- Quiet cul-de-sac location
  - Spacious lounge/diner
  - Decking and lawn area
  - Ample storage cupboards
  - Offered unfurnished

# The Main Text

Household Income to be considered for referencing: £33,000+

Tucked away in a tranquil cul-de-sac, this two-bedroom mid-terrace home offers a serene setting with the added convenience of off-street parking, ensuring a stress-free daily commute.

Upon entering, you are greeted by the entrance hall, with the kitchen conveniently located to your left. The kitchen is designed with ample storage cupboards and space for a range of electrical appliances, ensuring your daily chores are a breeze.

The spacious living and dining area extends across the rear of the property, complete with sliding doors that lead to the private rear garden. The garden, with its combination of decking and lawn, offers a versatile outdoor space perfect for a variety of activities, from relaxing to entertaining.

Upstairs, the property boasts two generously sized bedrooms along with a well-presented bathroom fitted with a bath and overhead shower. The property is offered unfurnished and would make an excellent home for professionals, couples, or small families seeking a quiet yet convenient location in Cardiff.

## Additional Information

Household Income to be considered for referencing: £33,000+

Rent: £1,100 Per Month

Deposit: £1269.00 x5 Weeks

0% Deposit Option Available

Please note: Applicants must have no active CCJs or IVAs to meet referencing criteria. Unfortunately, applications that do not meet these standards may result in an unsuccessful reference check and forfeiture of the holding deposit.

Type of home: Mid Terrace House

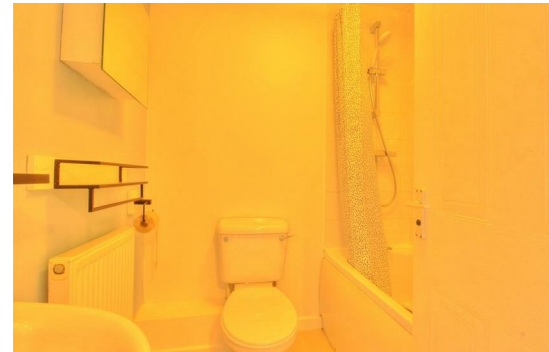
EPC: C

Council tax band: C

Borough: Cardiff

# *The Photographs*

Please note: we have provided space for 48 photographs over the next four pages, but we may not fill all 48 spaces if we don't need to. If there are more than 48 photographs then we will email the remainder to you.



# ***The Photographs***

Please note: we have provided space for 48 photographs over the next four pages, but we may not fill all 48 spaces if we don't need to. If there are more than 48 photographs then we will email the remainder to you.





