

# The Overview

Property Name:  
*Wilfred Street, Barry*

Price:  
*£200,000*

Qualifier:  
*Asking Price*

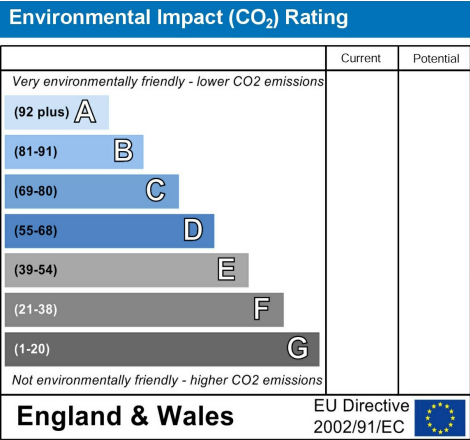
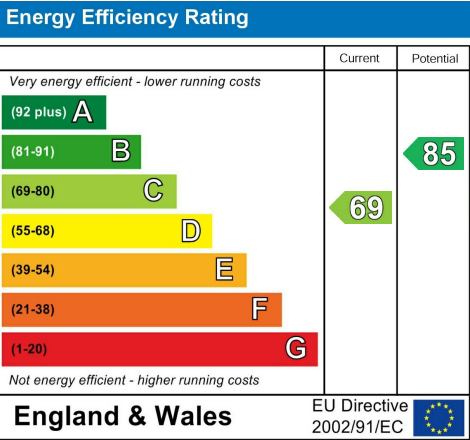
**3**

**2**

**1**

**C**

# The EPC



# The Bullet Points

- Spacious three-bedroom terrace
  - Open-plan dining area with under-stairs storage
  - Downstairs bathroom with bath and overhead shower
  - Three bedrooms with fireplaces
  - Good-sized rear garden with patio and gated access
- Bay-fronted living room
  - Modern kitchen with ample storage and worktops
  - Utility area with rear access
  - Family shower room with fitted storage
  - Characterful fireplaces in all bedrooms

A spacious three-bedroom terraced home located on Wilfred Street, Barry, CF63 3NY, offering a well-planned layout and characterful features throughout.

Enter the property into an entrance porch that leads into the hallway, with a bright living room at the front of the property, complete with a bay window and flows directly into the dining area. Both spaces feature wood-effect flooring and light grey and white décor, with handy understairs storage in the dining area.

To the rear, the kitchen is fitted with light grey cupboards, providing ample storage and generous worktop space. From here, access is available to the downstairs bathroom, which features a bath with an overhead shower, a WC, and a wash basin, all finished with white tiling and black tile-effect flooring. A utility area located near the back door provides space for a washing machine and offers access to the rear garden.

Upstairs, there are three spacious bedrooms, each featuring charming fireplace details, with the rear bedroom including a storage cupboard. The family shower room features a freestanding shower, WC, and a fitted sink unit with storage, completed with grey and black tile-effect flooring.

The well-sized rear garden features a patio area ideal for outdoor furniture and includes gated rear access. There is also a brick shed within the garden for storage.

Additional Information  
Type of home- Mid Terrace House  
Tenure- Freehold  
EPC Rating- C  
Council tax band- C  
Borough- Vale of Glamorgan

Local Area  
Situated in a popular area of Barry, Wilfred Street is surrounded by a vibrant

community and a variety of local amenities. The area offers a mix of traditional and modern housing, with nearby parks and green spaces providing opportunities for outdoor leisure. Residents can enjoy local shops, cafes, and recreational facilities, while the nearby coastline and Barry Island offer scenic walks and leisure activities, making it a well-rounded location for comfortable living.

Schools  
The area around Wilfred Street is well-served by a range of schools, offering options for children of all ages. Families benefit from access to both primary and secondary education within the local community, providing a variety of learning environments and extracurricular opportunities to suit different needs.

Local Transport  
Wilfred Street benefits from excellent local transport links. Residents have easy access to bus routes connecting Barry town centre and surrounding areas, while Barry train station provides regular services to Cardiff and beyond. The property is also conveniently located for road networks, making commuting straightforward and providing easy access to nearby towns and the wider Vale of Glamorgan.

Material Information Property Report  
You can click the property report to view the Utility Supply, Rights and Restrictions, Risks, and a full in-depth report on the property.

Please get in touch with us directly if you'd like a link or PDF sent to you.

NTSELAT Approved

# *The Photographs*

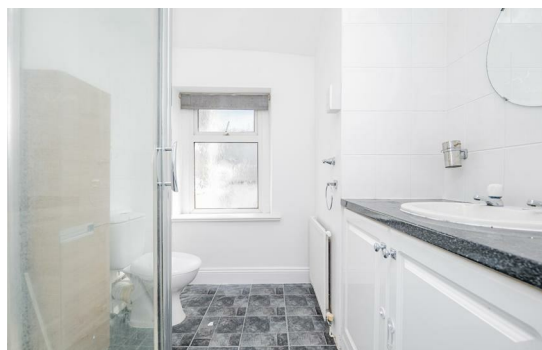
Please note: we have provided space for 48 photographs over the next four pages, but we may not fill all 48 spaces if we don't need to. If there are more than 48 photographs then we will email the remainder to you.





# The Photographs

Please note: we have provided space for 48 photographs over the next four pages, but we may not fill all 48 spaces if we don't need to. If there are more than 48 photographs then we will email the remainder to you.



# The Floorplan



Total floor area: 87.1 sq.m. (937 sq.ft.)

This floor plan is for illustrative purposes only. It is not drawn to scale. Any measurements, floor areas (including any total floor area), openings and orientations are approximate. No details are guaranteed, they cannot be relied upon for any purpose and do not form any part of any agreement. No liability is taken for any error, omission or misstatement. A party must rely upon its own inspection(s). Powered by [www.Propertybox.io](http://www.Propertybox.io)

# The Map

